

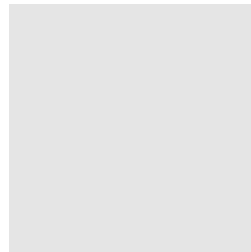
skram

skramfurniture.com



piedmont #1 stool-dining

PSI-1



The piedmont no. 1 stool features solid timber construction and a reinforced heavyweight leather sling seat. This product is offered in 3 standard heights for dining, counter, and bar applications. Model PSI-1 has a bridle joint stretcher at floor level. Models PSI-2 (counter) and PSI-3 (bar) have a metal footrest. Clients may specify timber, sling seat, and footrest materials/finishes from the options below. Custom options are available. Residential or contract use.

skram

PSI-I width 16 / 41cm depth 15 / 38cm height 18 / 46cm

Timber



WA-N: White
Ash, Natural



WA-G: White
Ash, Grey



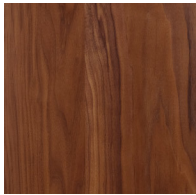
WA-E: White
Ash, Ebonized



WA-WW: White
Ash,
Whitewashed



RWO-N: Rift
White Oak,
Natural



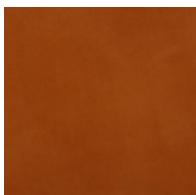
WAL: Walnut,
Natural



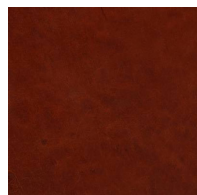
custom

Leather

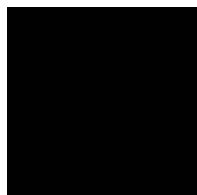
Character: Heavyweight



CL-TN-H: Tan



CL-CNT-H:
Chestnut



CL-BLK-H: Black

skram

Leather

Architectural



AL-WBG: Warm
Beige

COM - COL



AL BRN: Brown



AL-CRM: Cream



AL-MEDG:
Medium Grey



AL-SMK: Smoke



com-col