

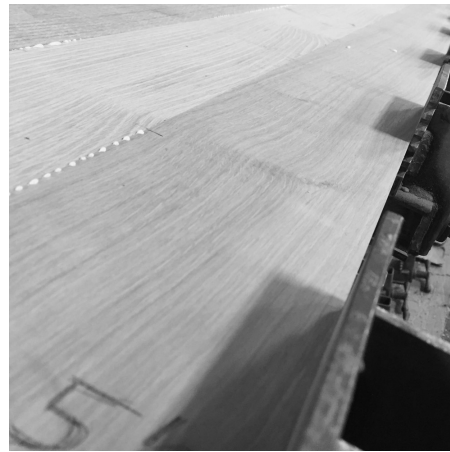
# skram

skramfurniture.com



## lineground side table/nightstand #3

L08



The lineground no. 3 side table features solid timber construction, mortise-and-tenon joinery, and mitered corners with matched seams/waterfall edges. Drawers are maple with cork-lined bottoms with soft-closing concealed runners and low profile tab style drawer pulls. Skram timber and veneer options are available on this product, as well as options for contrasting drawer face materials such as leather, opaque color, or bespoke options. Custom sizes, configurations, and materials are available. Residential or contract use.

# skram

---

**L08**    width 32 / 81cm    depth 18 / 46cm    height 24 / 61cm

---

## Timber

---



WA-N: White  
Ash, Natural



WA-G: White  
Ash, Grey



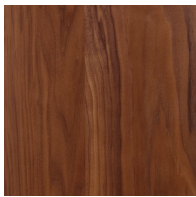
WA-E: White  
Ash, Ebonized



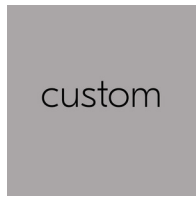
WA-WW: White  
Ash,  
Whitewashed



RWO-N: Rift  
White Oak,  
Natural



WAL: Walnut,  
Natural



custom

---

## Metal

---

### Natural



SS4: Brushed  
Stainless Steel



GML: Gunmetal



DRB: Dark  
Rubbed Bronze



NRB: Natural  
Rubbed Bronze

# skram

---

## Metal

---

### Matte Opaques



MOB: Matte  
Opaque Black



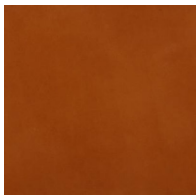
custom

---

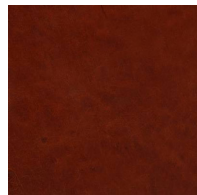
## Leather

---

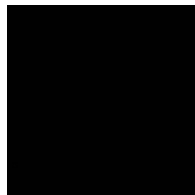
### Character: Heavyweight



CL-TN-H: Tan

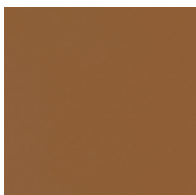


CL-CNT-H:  
Chestnut

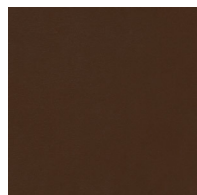


CL-BLK-H: Black

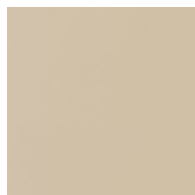
### Architectural



AL-WBG: Warm  
Beige



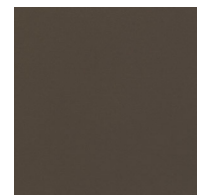
AL BRN: Brown



AL-CRM: Cream



AL-MEDG:  
Medium Grey



AL-SMK: Smoke