

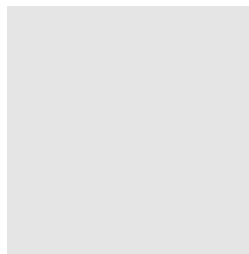
skram

skramfurniture.com



este leather satchel

ES2

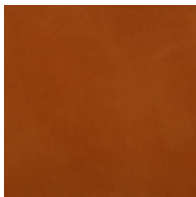


Description: The este leather satchel is handmade at skram's north carolina workshop. This satchel is part of an ongoing exploration of heavyweight saddle leather by skram founder and lead designer a. jacob marks. The este leather satchel is scaled for the transport of bulky items and is a dramatic decorative, utilitarian presence in the home. Este features U.S.A. hides in character-grade vegetable tanned, drum-dyed 8-9oz. leather.

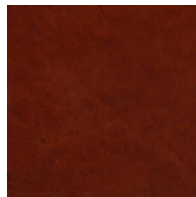
skram

ES2 width 23 / 58.5 depth 13.25 / 33.5 height 18 / 46

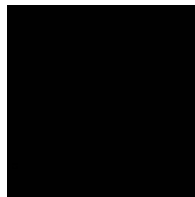
Leather



CL-TN-H: Tan



CL-CNT-H:
Chestnut



CL-BLK-H: Black