

# skram

skramfurniture.com



## piedmont #2 stool-dining

PS2-1



The piedmont no. 2 stool is a backless stool in steel and timber with a reinforced heavyweight leather sling seat. This product is offered in 3 standard heights for dining, counter, and bar applications. Clients may specify timber, sling seat, and metal materials/finishes from the options below. Custom options are available. Residential or contract use. Please contact skram for details regarding contract modified version of this product.

# skram

---

**PS2-1**    width 17 / 43cm    depth 15 / 38cm    height 18 / 46cm

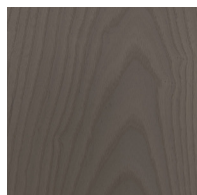
---

## Timber

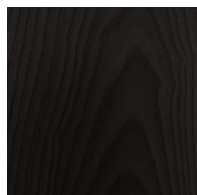
---



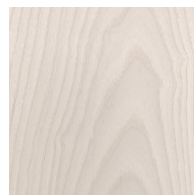
WA-N: White  
Ash, Natural



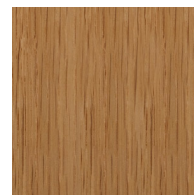
WA-G: White  
Ash, Grey



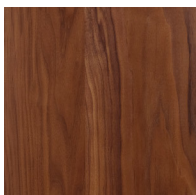
WA-E: White  
Ash, Ebonized



WA-WW: White  
Ash,  
Whitewashed



RWO-N: Rift  
White Oak,  
Natural



WAL: Walnut,  
Natural

---

## Metal

---

Natural



GML: Gunmetal

# skram

---

## Metal

---

### Matte Opaques



MOB: Matte  
Opaque Black



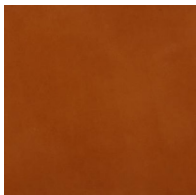
custom

---

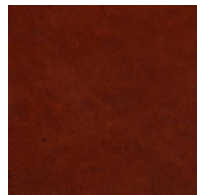
## Leather

---

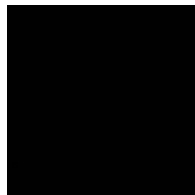
### Character: Heavyweight



CL-TN-H: Tan

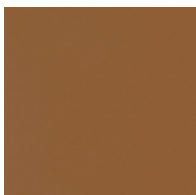


CL-CNT-H:  
Chestnut

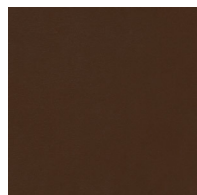


CL-BLK-H: Black

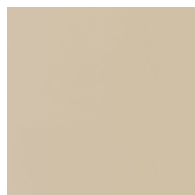
### Architectural



AL-WBG: Warm  
Beige



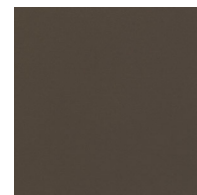
AL BRN: Brown



AL-CRM: Cream



AL-MEDG:  
Medium Grey



AL-SMK: Smoke

# skram

---

**Leather**

---

COM - COL



com-col